

GUIDELINES FOR ICE & DRY FLOOR SPORTS

Arena Operations



General Information

- All patrons will be expected to physical distance a minimum of 2 metres while in the building, this includes but not limited to washrooms, lobby, dressing rooms and common areas.
- Masks are mandatory inside the facilities unless participating in physical activities.
- All ice and dry floor bookings will be one (1) hour in length with a thirty (30) minute period between each booking for an ice clean and additional cleaning for the arena boards and dressing rooms. Start times for multi-sheet facilities will be staggered to eliminate contact with other user groups.
- User groups will be allowed to enter the facility and assigned dressing rooms ten (10) minutes prior to the start of their booking.
- Each group will be assigned two (2) dressing rooms per booking. The maximum occupancy for each dressing room will be posted outside the dressing room doors. Showers will be unavailable.
- A maximum of fifty (50) people per arena including participants, coaches, officials, scorekeepers, Health and Safety volunteer(s), and additional personnel (for minor groups, if required).
- Coaches, Health and Safety Volunteer(s) will be required to supervise minor group participants in the dressing rooms – two adults per dressing room.
- Minor Groups: If there are not enough personnel (coaches and Health & Safety) to satisfy the 2 Deep Method of supervision, an additional 1 – 2 adults can enter, depending on how many dressing rooms are required. **The maximum of the 50-person per arena applies.** *For further clarification, see examples in Appendix A.*
- Spectators or parents will not be permitted into the facility.
- If a participant is unable to participate in a program without 1-on-1 support, the supporting adult will be allowed entry to assist the participant. The maximum of the 50-person per arena applies.
- All participants, coaches, officials, scorekeepers, designated health and safety person, and team personnel must arrive on time, no late comers will be given access to the building once the ice or dry floor time has started.
- There will be no in and out privileges.
- In accordance with the Public Health Order, indoor sports are no longer required to physical distance while in the field of play (surfaces, player benches).
- **Spitting or water bottle fights will NOT be tolerated.** Anyone seen or found spitting on the surface, player benches or anywhere in the facility will be asked to leave the building. Evidence of spitting or water fights will be considered a breach in the Arena Re-Opening Guidelines.
- After the ice/dry floor booking, groups will have ten (10) minutes after the end of their booking to remove their equipment. The group will be met by the Facility Host and escorted out of the dressing rooms and facility.
- There will be designated entrances and exits and a one-way traffic flow, marked by decals on the floor, to direct participants throughout the facility and promote physical distancing (See Appendix B)

Prior to Arriving at the Facility

- Participants are allowed to bring in their equipment/gear bags into the facility – additional bags are prohibited.
- If participants need assistance with putting on required equipment or cannot do so within the allotted 10-minutes, we suggest they dress at home or in the car.
- Participants must bring a full water bottle.
- Bring minimal or no personal belonging as dressing room will remain unlocked and doors propped open.
- Any warm-ups must be done outside of the facility prior to entering for your group's booking.

Arriving at the Facility

- All participants, coaches, officials, scorekeepers, and team personnel will be met at the front door by the facility host and the organizations designated health and safety person (HSP). All patrons attending the dry floor/ice booking will be required to complete a health check with their organization prior to entering the facility.
- A coach, team personnel, or safety person must escort participants to the dressing rooms. The participants will be let into the facility ten (10) minutes prior to the start of their booking. **All participants, coaches, officials, scorekeepers, designated health and safety person, and team parents must arrive on time, as no late comers will be given access to the building once the booking time has started.**

Entering the Facility

- Hand sanitizer stations will be located at the entrance of the facility. Anyone entering the building will be asked to use the sanitizer as they enter.
- Please sit in the designated areas labelled in the dressing room(s) to ensure all participants are minimum of two (2) meters apart.
- Showers in the dressing rooms will not be available for use.
- Dressing room doors will remain unlocked and propped open during the booking to reduce touchpoints.
- Any team personnel (Health & Safety, additional personnel) must socially distance in the player benches and/or around the ice/dry floor surface. Spectator seating and lobbies are closed.

On the Ice/Dry Floor

- In accordance with the Public Health Order, indoor sports are no longer required to physical distance while in the field of play (Ice or dry floor surfaces, player benches).
- **Spitting or water bottle fights will NOT be tolerated.** Anyone seen or found spitting on the ice, player benches or anywhere in the facility will be asked to leave the building. Evidence of spitting or water fights will be considered a breach in the Arena Re-Opening Guidelines.

- Cones and equipment must be brought by the coach. The arena will have no shared equipment available for use.
- User groups will be responsible for all first aid and medical incidents for their own group.
- If music is required, groups must designate one person to control the music during that booking.

Exiting the Facility

- At the end of your ice time, you will have ten (10) minutes to remove equipment. The group will be met by the Facility Host and escorted out of the facility as a group.
- The group must exit the facility all together, the group includes participants, coaches, officials, scorekeepers, Health & Safety volunteer, and any other team personnel.
- Hand sanitizer will be available for all patrons on their way out of the facility.

COVID-19 Test Positive Procedure

- If an event patron develops symptoms at the facility, an isolation room will be provided to separate the participant from the rest of the group. Participant must call local health authorities to receive further instructions.
- If an event patron tests positive for COVID-19, the organization must notify the facility manager immediately and follow instructions from the local health authorities.

Cleaning

- There will be 30 minutes between each user group to allow time for cleaning.
- High traffic areas and touch points will be cleaned regularly.

Violation of Re-Opening Guidelines, Safety Plans, or Facility Code of Conduct

- User groups who violate the Arena Re-Opening Guidelines, Safety Plan or Code of Conduct will be documented.
 - Stage 1 – Conversation with Facility Host and documentation of infraction or breach.
 - Stage 2 – Verbal follow-up with Arena Operations Management.
 - Stage 3 – Written warning from Arena Operations Management.
 - Stage 4 – Depending on frequency and/or severity of the infractions, groups could be referred to the City of Surrey Suspension Committee.

Appendix A: Examples of 2 Deep Method of Supervision

Example 1 - More than 2 Coaches; and requires 2 Dressing Rooms

- There are:
 - 15 Participants
 - 3 Coaches
 - 1 Health and Safety Volunteer
 - No additional adults are required

Example 2 – Less than 2 Coaches; and requires 2 Dressing Rooms

- There are:
 - 15 Participants
 - 2 Coaches
 - 1 Health and Safety Volunteer
 - 1 Additional Adult

Example 3 – Only 1 Coach; and requires 2 Dressing Rooms

- There are:
 - 15 Participants
 - 1 Coach
 - 1 Health and Safety Volunteer
 - 2 Additional Adults

Example 4 – Only 1 Coach; and requires only 1 Dressing Room

- There are:
 - 10 Participants
 - 1 Coach
 - 1 Health and Safety Volunteer
 - No additional parents are required

Example 5 – Female or Co-Ed Team – Two Dressing Rooms

- There are:
 - 15 Participants
 - 1 Male Coach/ 1 Female Coach
 - 1 Male Health and Safety Volunteer
 - Minimum of 1 Additional Female Adult – *BC HOCKEY: There shall be 2 female supervisors with the players where possible. If not possible there may be one (1) male and one (1) female supervisor.*

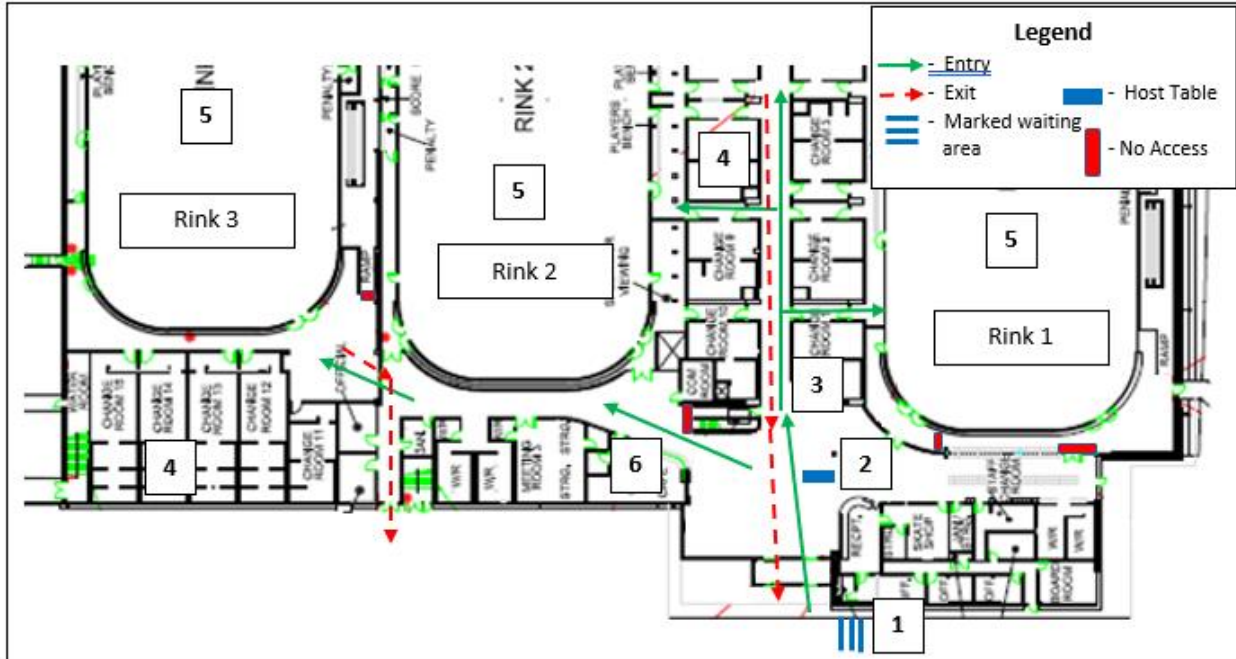
Appendix A Reference:

Hockey Canada and BC Hockey

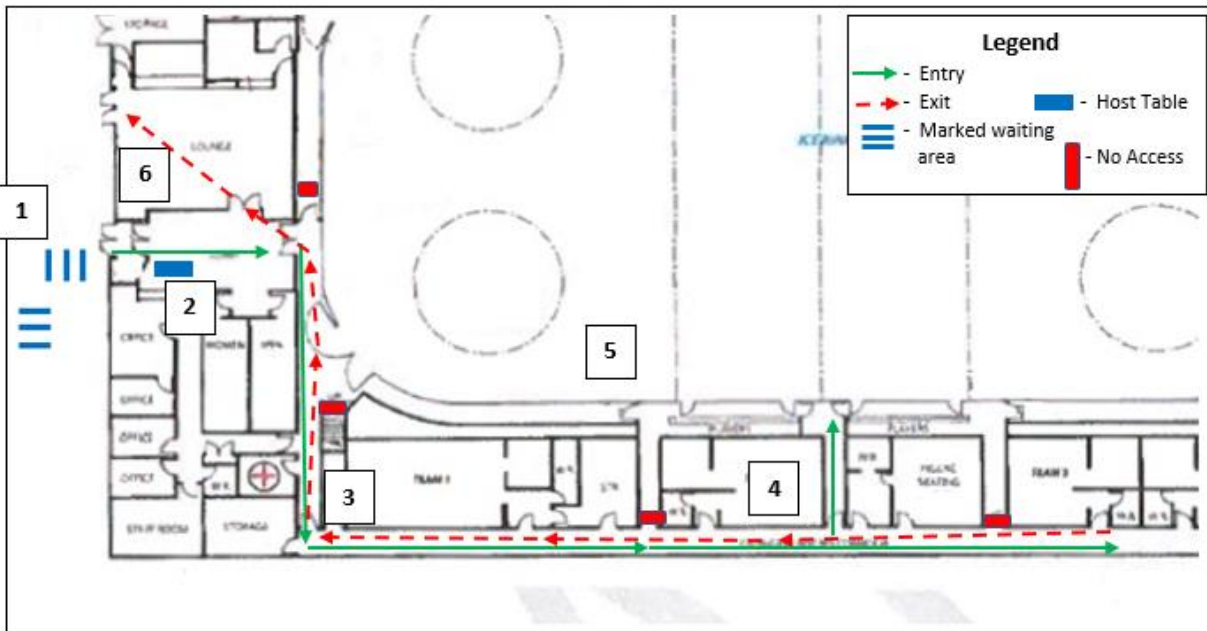
<https://www.bchockey.net/Administration/BulletinItem.aspx?id=217>

Appendix B – Facility Flow Maps

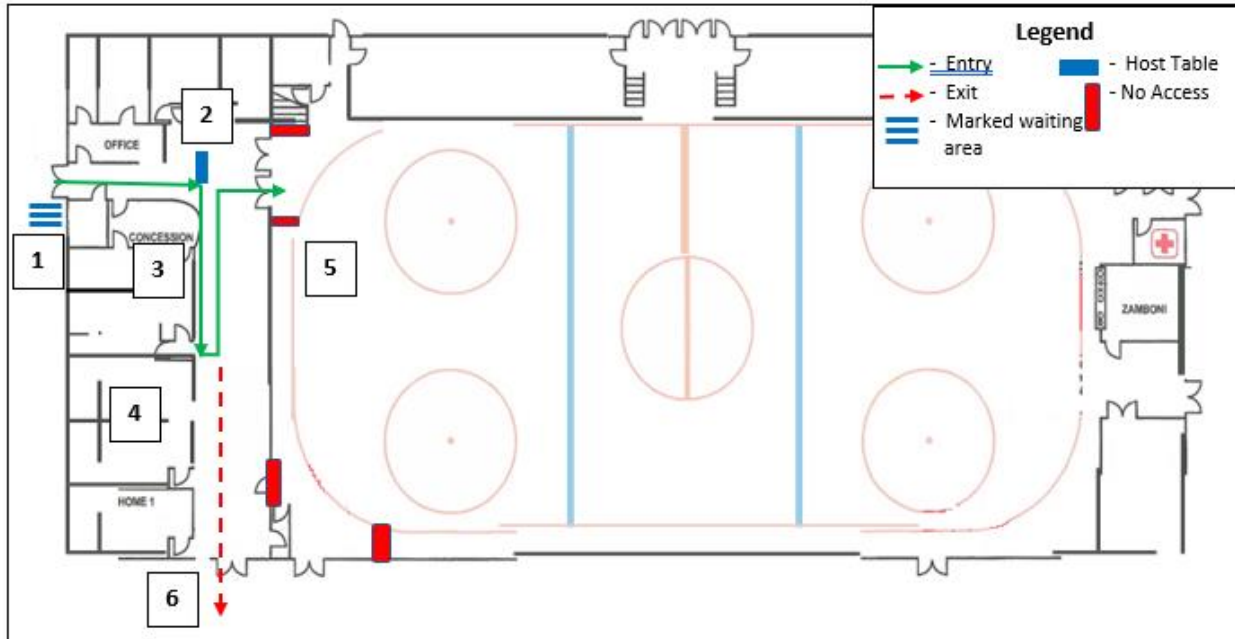
North Surrey Sport & Ice Complex Facility Map (Dry Floor)



South Surrey Arena Facility Map (Ice)



Cloverdale Arena Facility Map (Dry Floor)



Surrey Sport & Leisure Arena Facility Map (Ice)

